

B 10 Injector Adjustment, after Test

Preliminary work:	
Injector remove, install	07.1-6810
Injector test	07.1-6712

Operation No. of Text Description and Time Allowance 07-6750 or 07-6752

Test Conditions

- 1 Injector
- 2 Injector needle (31)
- 3 Injector body (32)
- 4 Intermediate plate (33)
- 5 Thrust pin (34)
- 6 Injector clamping nut (35)
- 7 Compression spring (36)
- 8 Retaining body (37)
- 9 Steel shim (40)

- recondition.
- remove, install, perform visual and sliding test.
- remove combustion residue.
- polish on surface plate.
- remove, insert, tip must face upper part.
- remove, install, tightening torque 70 – 80 Nm.
- remove, insert.
- clamp in protective vise jaws for disassembly and assembly.
- select according to injector opening pressure.

Nominal value:

Adjust opening pressure to 115 – 125 bar for new injector or injector to be newly adjusted, at least 110 bar for used injector. Depending on shim thickness the opening pressure is higher or lower. 0.02 mm produce a pressure differential of approximately 2 – 3 bar.

B 10 Injector Adjustment, after Test

Engine 606.912 IFI

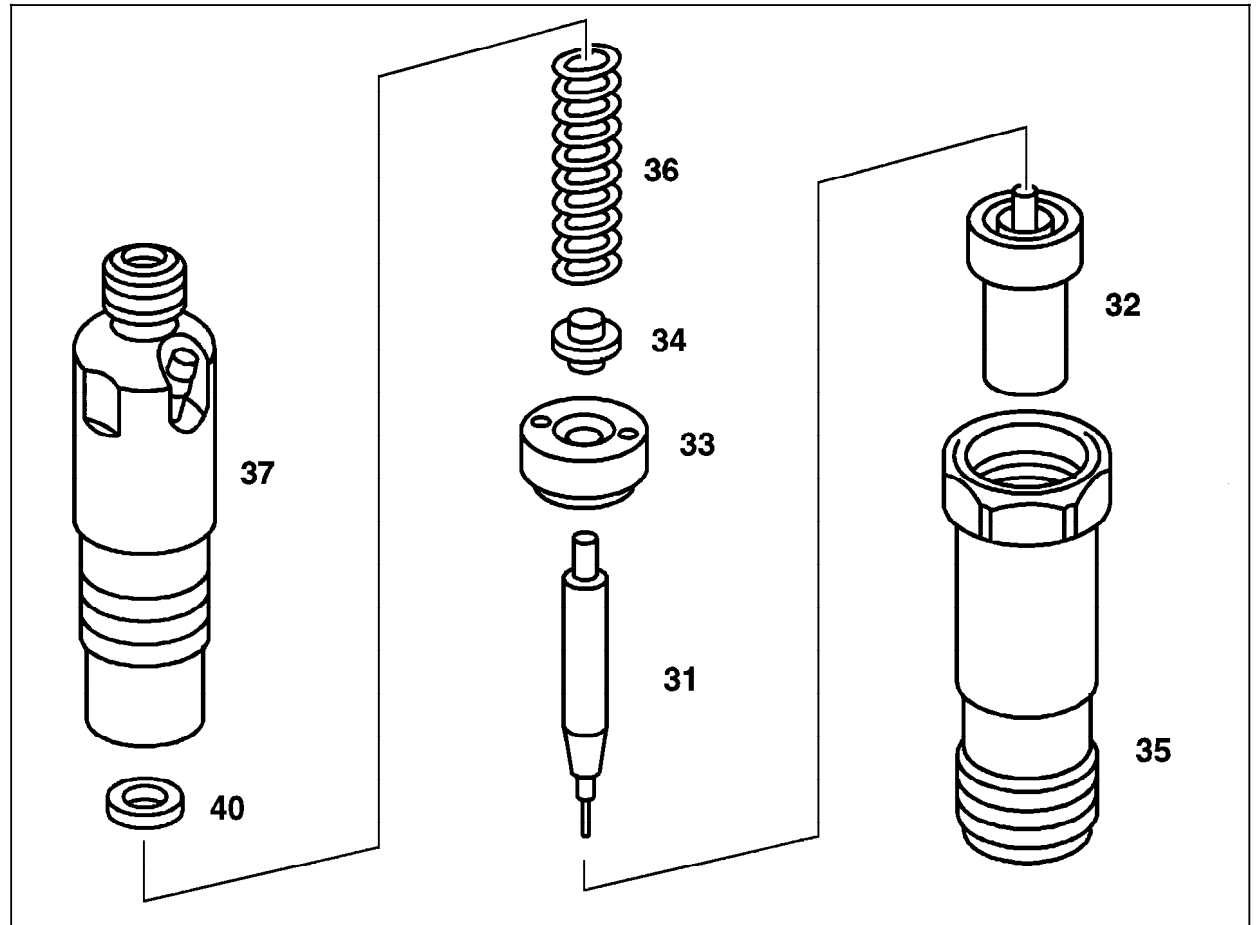


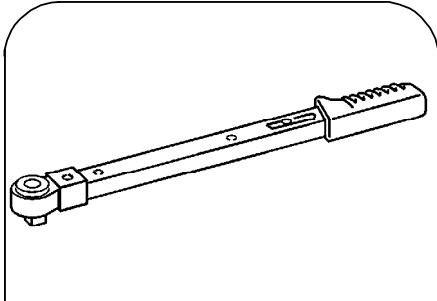
Figure 1

- 31 Injector needle
- 32 Injector body
- 33 Intermediate plate
- 34 Thrust pin
- 35 Injector clamping nut
- 36 Compression spring
- 37 Retaining body
- 40 Steel shim

P07-6352-57

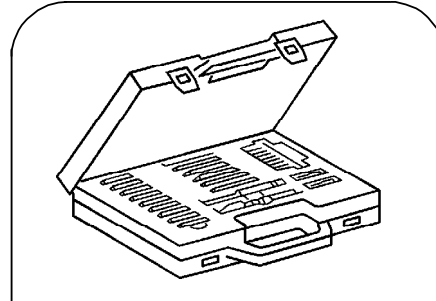
B 10 Injector Adjustment, after Test

Special Tools



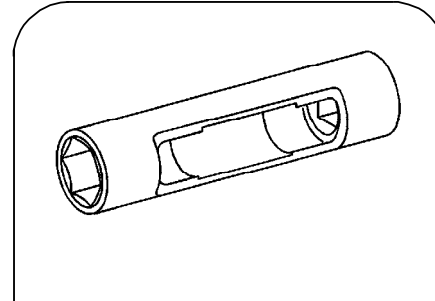
001 589 66 21 00

Torque wrench



000 589 00 68 00

Cleaning set



606 589 00 09 00

Socket